

# PHEASANTS NESTS

Petrol Stations into  
Architectural Marvels



**LINK**  
Decorative Designs



We are thrilled to announce the completion of a landmark project—a petrol station transformed into an architectural masterpiece, exquisitely executed by Link Decorative Designs. From March 2023 to July 2023, this project highlights the beauty and innovation of using locally sourced aluminium with an exceptional woodgrain finish.



**LINK**  
Decorative Designs

## Material Specifications

The meticulous selection of materials played a crucial role in achieving the project's aesthetic and structural excellence. All aluminium components were locally sourced and ASI (Aluminium Stewardship Initiative) approved, reflecting our dedication to quality and sustainability.

The creation of the Pheasant Nests project involved the utilization of cutting-edge materials like LDD 150 Cladding, LDD 50 x 50 two-part battens, alongside the sleek 150 x 50 RHS profiles of approximately 4,500 sqm, to craft a masterpiece that transcends conventional design boundaries.

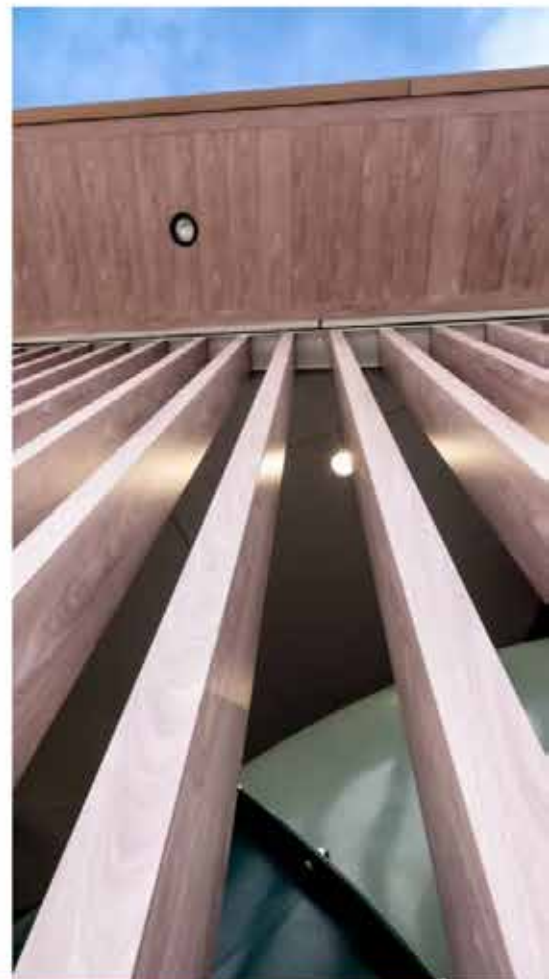


**LINK**  
Decorative Designs



## The Beauty of Woodgrain Finish

A standout feature of this project is the striking woodgrain finish applied to the aluminium by Link Decorative Designs. This finish combines the natural, warm aesthetics of wood with the durability and low maintenance of aluminium. The result is a visually appealing and long-lasting exterior that enhances the overall beauty of the petrol station.



**LINK**  
Decorative Designs



**LINKK**  
Decorative Designs



Embracing **LocAL GREEN** aluminium supply represents a proactive step towards building a greener, more sustainable future. Not only does it protect the environment, but it also promotes economic resilience, fosters community engagement, and aligns with corporate sustainability goals. Together, we can make a significant impact on preserving our planet while creating a brighter future for all.

Thank you for your continued support as we strive towards a more sustainable world.

